

JULY 24-28, 2023

**ETONHOUSE INTERNATIONAL
PRE-SCHOOL TOKYO**

SUMMER PROGRAM

IN HAKUBA

**BOOK
NOW**

**EXCITING ADVENTURE-FILLED
SUMMER PROGRAMME IN HAKUBA
AWAITS YOU!**



- The following is a tentative itinerary and is subject to change.
- Activities and scheduling may be adjusted due to weather conditions and level of interest from participants.

DAY 1

7/24 (MON)

AM Meet at JR Shinjuku Sta. (South Entrance)
 08:00 Depart on Azusa No. 5 Shinjuku→Shinano-Ōmachi Sta.
 *Travel by Express Train
 11:15 Private transfer to Rising Field (Lunch after arrival)

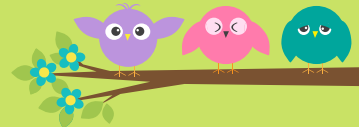
• Orientation • Team building • Board games

Meals B:× L:○ D:○ 【Stay: RISING FIELD HAKUBA】

DAY 2

7/25 (TUE)

HAKUBA Summer Camp



• SUP Orientation • SUP Activity
 • Team building (Games / projects) • Firefly Outing

Meals B:○ L:○ D:○ 【Stay: RISING FIELD HAKUBA】

DAY 3

7/26 (WED)

HAKUBA Summer Camp



• SUP Orientation • SUP Activity
 • Team building (Games / projects) • BBQ Dinner • Board games

Meals B:○ L:○ D:○ 【Stay: RISING FIELD HAKUBA】

DAY 4

7/27 (THUR)

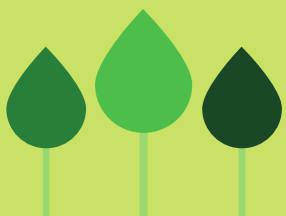
HAKUBA Summer Camp

• SUP Orientation • SUP Activity • Team building (Games / projects / how to start a fire / BBQ prep) • BBQ Dinner • Evening by the campfire

Meals B:○ L:○ D:○ 【Stay: RISING FIELD HAKUBA】

DAY 5

7/28 (FRI)



08:15 Depart for 'Kawanoeki Sazanami' Rest Area
 09:15 Saigawa Rafting & Lunch
 13:15 Free time after lunch (until departure)
 15:00 Private transfer to Shinano-Ōmachi Sta.
 15:43 Take Azusa No. 46 Shinano-Ōmachi→Shinjuku Sta.
 *Travel by express train
 19:06 End of programme after arrival in Shinjuku Sta.

Meals B:○ L:○ D:×

*Activities are tentative and are subject to change. See the Handbook for finalised activity details.

* Programme Details *

Dates

2023 / 7 / 24 (MON) - 7 / 28 (FRI) [5 DAYS]

Destination

Hakuba, Nagano Prefecture

Accommodation

Rising Field Hakuba, Taira 20754-1, Omachi, Nagano 398-0001

Programme Fee

Programme Fee (per person) 176,000 JPY (Tax. Incl.)

※Note) Application fee of 30,000 JPY is non-refundable.

Minimum No. of Participants

25 (Max. 35)

Eligible Age Group

8-14

No Tour Conductor (EtonHouse Staff will join group)

■ Items included in programme fee

- *Railway costs: JR Shinjuku-Shinano-Ōmachi Sta. return ticket (normal carriage)
- *Local costs: Private transfers
- *Accommodation costs
- *Meals: Bx4, Lx5, Dx4
- *Activity costs (Activities are subject to change.)
- *Domestic travel insurance
- *Travel arrangements handling fee

■ Items not included in programme fee

- *Those travelling directly to and from Rising Field Hakuba are responsible for own travel costs both ways.

Application
Deadline

2023 / 6 / 13 (TUE) 17: 00

※Or any date prior if max. participants are reached

※If the minimum number of participants for this programme are not reached, a notice of cancellation will be sent to applicants 31 days before the starting date.

Read the following carefully before applying.

• FAQ • Terms & Conditions • Travel Agreement

Click here  **to apply**

■ **To cancel click here**

Travel Terms (summary)

[Subscription Type Organised Tour Contract]

This tour is a made-to-order planned programme arranged by Arc Three International Co., Ltd. (hereinafter referred to as our company), and customers participating in this tour must conclude a made-to-order planned travel contract with us. The terms and conditions of the contract, in addition to those published in this pamphlet, are the final document (hereinafter referred to as the "Handbook") and the Company's travel agency agreement (referred to as the "Travel Agreement").

[Applications] After reviewing the FAQ, terms & conditions, and travel conditions, fill in the necessary information from the link on page three to apply.

[Cancellations] The programme will be cancelled 31 days prior to the starting date if the minimum number of participants written on this pamphlet is not fulfilled by that date. Participants will be notified if the programme is cancelled, and applicable travel costs will be refunded.

[Payment] After applying, participants will receive a URL detailing the payment date, etc. Make the payment by credit card by the due date. (Payment deadline varies according to date of application received.) The programme fee is to be paid in full in principle. Contact us if you wish to pay in instalments. Please note that your reservation will be automatically cancelled if the payment cannot be confirmed by the due date.

[Disclaimer] Our company will not be responsible for any damages caused by natural disasters, weather conditions, riots; or changes in itineraries or cancellation of the programme due to orders from government offices, isolation due to infectious diseases, accidents during free movement, food poisoning, theft; transportation delays, interruptions, or change of itinerary or shortening of time at the destination caused by the aforementioned.

[Special Compensation] Regardless of the intentional act or negligence of our company or the person to whom we may entrust arrangements, our company shall comply with the special compensation provisions in the separate sheet of the made-to-order planned travel contract. We will pay a security deposit or condolence money within the range of the amount stipulated in advance in our company's contract special compensation provisions as pertains to certain damage to the body, life, or baggage caused by an external accident.

[Itinerary guarantee] If there is a substantial change in the contract contents described in this pamphlet, which is listed in our travel agency contract, our company will pay compensation for the change as stipulated in the contract.

[Cancellation by Participant (cancellation fee)] The customer may cancel the tour contract by paying the following cancellation fee. *Date request to cancel is acknowledged applies.

Schedule 1 - Cancellation fees (related to Article 16, paragraph 1)

1. Cancellation fees related to Domestic Trip

Classification	Cancellation Fee
a. Subscription Type Organized Tour Contract excluding the following column b	
(1) In cases where the Contract is cancelled on or after the 20th day (the 10th day in the case of a day trip) from the day immediately preceding the starting day of the Tour (except in the following cases from (2) through (5)).	Up to 20% of the Tour Price ... 30,000 JPY
(2) In cases where the Contract is cancelled on or after the 7th day from the day immediately preceding the starting day of the Tour (except in the following cases from (3) through (5)).	Up to 30% of the Tour Price ... 35,200 JPY
(3) In cases where the Contract is cancelled on the day immediately before the starting day of the Tour.	Up to 40% of the Tour Price ... 52,800 JPY
(4) In cases where the Contract is cancelled on the starting day of the Tour (except in the following case (5)).	Up to 50% of the Tour Price ... 88,000 JPY
(5) In cases where the Contract is cancelled after the start of the Tour or the traveler does not participate in the Tour without notice (no show).	Up to 100% of the Tour Price ... 176,000 JPY



Planning & Organiser

EtonHouse International Pre-School Tokyo

〒105-0052 9-2-16 Akasaka, Minato-ku, Tokyo

TEL 03-6804-3322 FAX 03-6804-3323



Travel Planning & Operator

ARC Three International Co., Ltd.

〒530-0012 13 Umeda Kita Place, 1-14-8 Shibata, Kita-ku, Osaka

TEL 06-7633-0010 FAX 06-7633-0013 ■Responsible / Murakami · Yoshioka

■Certified General Travel Services Manager / Tatsuaki Yoshioka

■Open: Monday-Friday 10:00-17:00

